

Pithy Projects

Hand Piecing Project

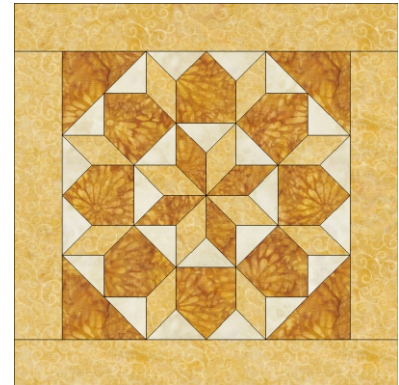
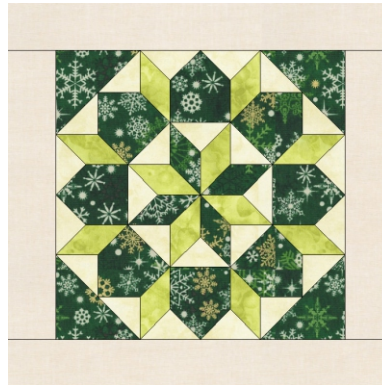
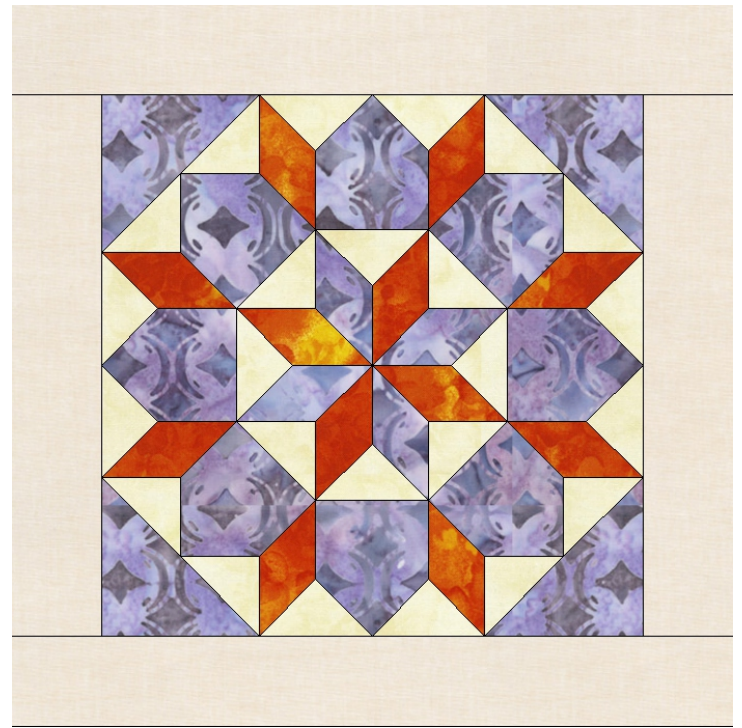
by Pioneerlady at Pithyponderings

Bethlehem Star

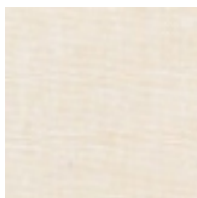
Finished Block 10" Square

Similar in style to a few other star blocks, this one was give the name Bethlehem Star in 1938.

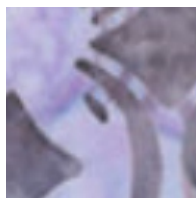
In that same year another publication called it the Winged Star. The year before it was called the Star of the Magi.



An 1/8 yard cut of fabric will be enough for fabrics A, B, C, and D.



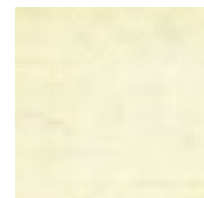
A



B



C



D

All template pieces on the following pages are drawn without seam allowances.

I have provided templates in color and in outline. You can use whichever you choose.

