

Pithy Projects

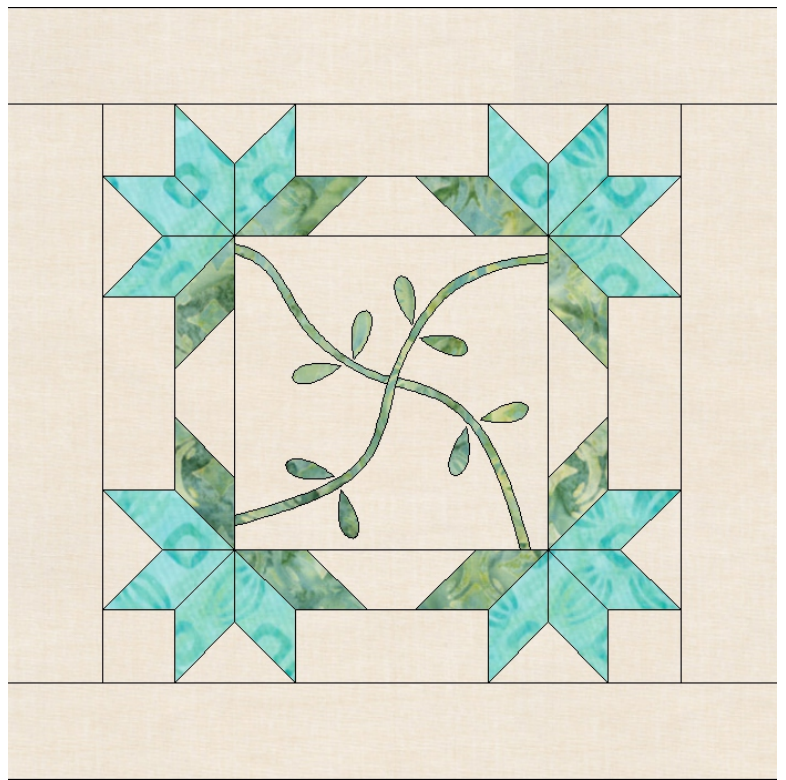
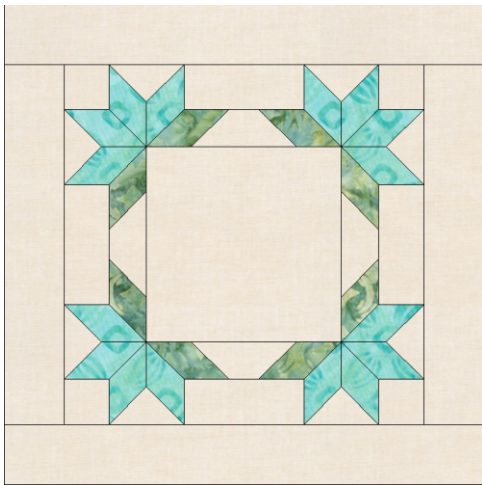
Hand Piecing Project

by Pioneerlady at Pithyponderings

Double Tulip

Finished Block 10" Square

This block is designed to use applique but it can be made without.



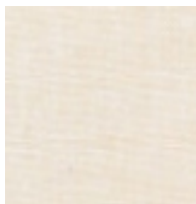
If using applique, consider using bias edging or bias strips turned into tubes.

The templates for the vines and leaves are just a guide.

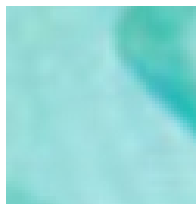
You could also consider embroidery or paint as an option to the applique.

An 1/8 yard cut of fabric will be enough for fabrics B and C.

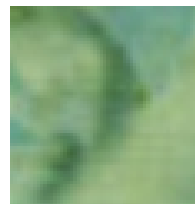
You will need more than 1/8 yard of fabric A.



A



B



C

All template pieces on the following pages are drawn without seam allowances.

I have provided templates in color and in outline. You can use whichever you choose.

